

KS2 Study Club

Maths Week 8 Workbook

Questions



KS2 Study Club

Topics

Welcome to week 8 of your 10 week Study Club!

Every week you'll get a practice workbook to work through a range of topics, taken from our KS2 Maths Intermediate Course.

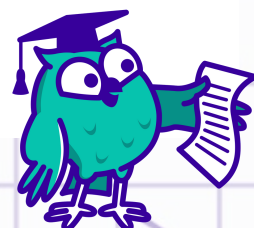
We've also included links to 2 of our expert tutorial videos on some of these exact questions. That way, if you get stuck, you can try watching one of our tutorial videos with our Maths expert Patricia.

For full access to all of the corresponding videos sign up for a SchoolOnline subscription from £8.99 a month.

In next week's email we'll send you the answers to this workbook to download *PLUS* a brand new workbook to practice.

Your week 8 workbook topics are:

- Geometry
- Ratio, Proportion and Algebra



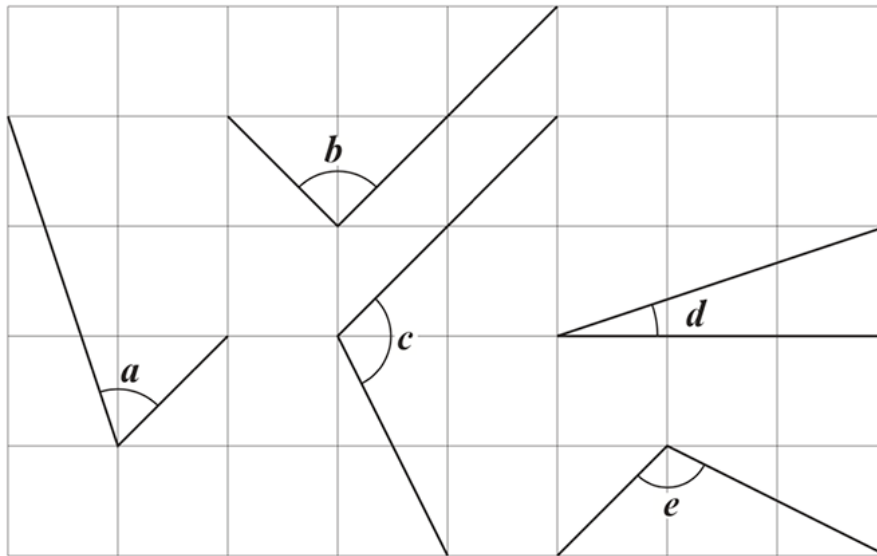
Geometry 1

Angles

2016 Paper 3 Reasoning

7

Here are five angles marked on a grid of squares.



Write the letters of the angles that are **obtuse**.

1 mark

Write the letters of the angles that are **acute**.

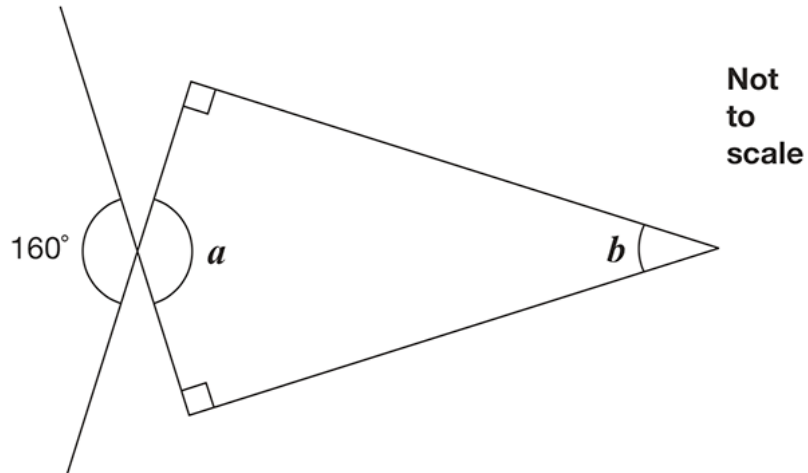
1 mark

Angles

2016 Paper 2 Reasoning

17

Calculate the size of angles a and b in this diagram.



$a =$ _____
1 mark

$b =$ _____
1 mark

Equilateral Triangle

2018 Paper 3 Reasoning

14

Two of the angles in a triangle are 70° and 40°

Jack says,

The triangle is equilateral.



Explain why Jack is **not** correct.

A large, empty, cloud-shaped box with a scalloped border, intended for the student to write their explanation.

1 mark

Angle Rules

2019 Paper 3 Reasoning

13



Kirsty says,

When you double the size of an acute angle,
you always get an obtuse angle.

Explain why Kirsty is **not** correct.

A large, empty, cloud-shaped box with a scalloped border, intended for the student to write their explanation.

1 mark

KS2 Study Club

Expert tutorial

Key stage 2 Mathematics
Paper 3: reasoning

13

Kirsty says,



When you double the size of an acute angle, you always get an obtuse angle.



Explain why Kirsty is not correct.

Click to play!

Need some extra help? That's what we're here for!

In this video Patricia will explain how to answer the last question in the Angles section of your workbook (Q13).

Grab your pen and paper and remember to take notes! If you want more access to awesome videos like this, [sign up for a full SchoolOnline subscription here.](#)

Ratio, Proportion & Algebra 3

Percentage - Problem

2018 Paper 3 Reasoning

8

Jack has £400

He spends **35%** of his money on a new bike.



How much does Jack spend on his new bike?

£

1 mark

'Of' Percentage Question

KS2 Study Club

Expert tutorial



Need some extra help? That's what we're here for!

In this video Patricia will explain how to answer the first question in the Ratio, Proportion and Algebra section of your workbook on the percentage problem (Q13).

Grab your pen and paper and remember to take notes! If you want more access to awesome videos like this, [sign up for a full SchoolOnline subscription here.](#)

