

KS2 Study Club

Maths Week 6 Workbook

Questions



KS2 Study Club

Topics

Welcome to week 6 of your 10 week Study Club!

Every week you'll get a practice workbook to work through a range of topics, taken from our KS2 Maths Intermediate Course.

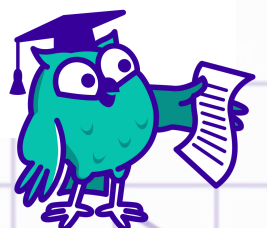
We've also included links to 2 of our expert tutorial videos on some of these exact questions. That way, if you get stuck, you can try watching one of our tutorial videos with our Maths expert Patricia.

For full access to all of the corresponding videos sign up for a SchoolOnline subscription from £8.99 a month.

In next week's email we'll send you the answers to this workbook to download *PLUS* a brand new workbook to practice.

Your week 6 workbook topics are:

- Factors, Multiples and Primes
- Fractions, Decimals and Percentages



Factors, Multiples + Primes

Common Multiples

2016 Paper 2 Reasoning

14

Write **all** the common multiples of 3 and 8 that are **less than 50**

 1 mark

Factors, Multiples and Primes

2019 Paper 3 Reasoning

11

Here are five numbers.

~~2~~ 3 4 5 6

Write each number on the correct cards.

The number 2 has been written on the correct cards for you.

Prime numbers

2

Factors of 12

2

Factors of 15

 2 marks

Factors

2017 Paper 3 Reasoning

8

Write three factors of 30 that are **not** factors of 15

2 marks

KS2 Study Club

Expert tutorial



Need some extra help? That's what we're here for!

In this video Patricia will explain how to answer the last question in the Factors, Multiples and Primes section of your workbook (Q8).

Grab your pen and paper and remember to take notes! If you want more access to awesome videos like this, [sign up for a full SchoolOnline subscription here.](#)

Fractions, Decimals & Percentages 3

Equivalent Fractions and Decimals

2019 Paper 3 Reasoning

18

Tick the fractions **less than** $\frac{5}{8}$

$$\frac{1}{2} \quad \square$$

$$\frac{2}{8} \quad \square$$

$$\frac{3}{4} \quad \square$$

$$\frac{7}{16} \quad \square$$

$$\frac{24}{32} \quad \square$$

2 marks

Fractions and Decimals

2017 Paper 3 Reasoning

17

In each box, circle the number that is **greater**.

$$1\frac{1}{2}$$

1.2

$$1\frac{1}{4}$$

1.3

$$1\frac{5}{100}$$

1.4

$$1\frac{3}{5}$$

1.5

2 marks

2017 Paper 2 Reasoning

20

Adam says,

0.25 is **smaller** than $\frac{2}{5}$



Explain why he is correct.

1 mark

Improper Fractions

2018 Paper 2 Reasoning

13

Circle the improper fraction that is equivalent to $6\frac{7}{8}$

$$\frac{67}{8}$$

$$\frac{48}{8}$$

$$\frac{62}{8}$$

$$\frac{55}{8}$$

$$\frac{76}{8}$$

1 mark

KS2 Study Club

Expert tutorial

The image shows a laptop screen displaying a math question. At the top left, it says 'Key stage 2 Mathematics Paper 3: reasoning' and '18'. The question is 'Tick the fractions less than $\frac{5}{8}$ '. There are three fractions listed: $\frac{1}{2}$, $\frac{2}{8}$, and $\frac{7}{16}$, each with a checkbox to its right. A purple banner with the text 'Click to play!' is overlaid on the screen, with a white arrow pointing to the checkbox for $\frac{7}{16}$.

Need some extra help? That's what we're here for!

In this video Patricia will explain how to answer the first question in the Fractions, Decimals & Percentages questions section of your workbook (Q18) which looks at an Equivalent Fractions and Decimals.

Grab your pen and paper and remember to take notes! If you want more access to awesome videos like this, [sign up for a full SchoolOnline subscription here.](#)

