

KS2 Study Club

Maths Week 4 Workbook

Questions



KS2 Study Club

Topics

Welcome to week 4 of your 10 week Study Club!

Every week you'll get a practice workbook to work through a range of topics, taken from our KS2 Maths Intermediate Course.

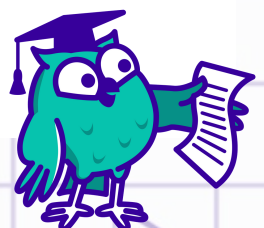
We've also included links to 2 of our expert tutorial videos on some of these exact questions. That way, if you get stuck, you can try watching one of our tutorial videos with our Maths expert Patricia.

For full access to all of the corresponding videos sign up for a SchoolOnline subscription from £8.99 a month.

In next week's email we'll send you the answers to this workbook to download *PLUS* a brand new workbook to practice.

Your week 4 workbook topics are:

- Ratio, Proportion and Algebra questions including sequences.
- Fractions, Decimals & Percentages questions including Adding fractions.



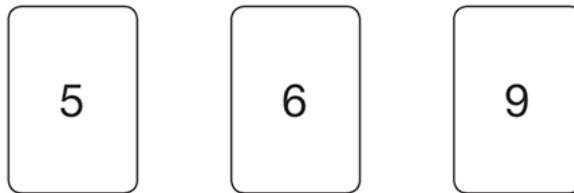
Ratio, Proportion & Algebra 1

Digit Cards

2017 Paper 3 Reasoning

3

Chen uses these digit cards.

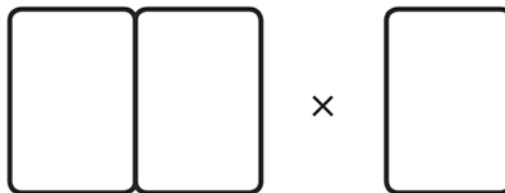


She makes a 2-digit number and a 1-digit number.

She multiplies them together.

Her answer is a **multiple of 10**

What could Chen's multiplication be?



1 mark

Multiplication Grid

2017 Paper 2 Reasoning

3

Write the missing numbers to make this **multiplication** grid correct.

	×	<input type="text"/>	<input type="text"/>
<input type="text"/>	9	63	54
<input type="text"/>		56	48

1 mark

Sequence

2018 Paper 2 Reasoning

9

The list below shows the years in which the Cricket World Cup was held since 1992:

1992, 1996, 1999, 2003, 2007, 2011, 2015

Adam says,

The Cricket World Cup has been held every four years since 1992.



Adam is **not** correct.

Explain how you know.

A large, empty, cloud-shaped box with a scalloped border, intended for the student to write their explanation.

1 mark

Number Sequences

2019 Paper 2 Reasoning

5

The numbers in this sequence **increase** by 45 each time.

Write the missing numbers.

<input type="text"/>	155	200	245	<input type="text"/>	<input type="text"/>
----------------------	-----	-----	-----	----------------------	----------------------

2 marks

KS2 Study Club

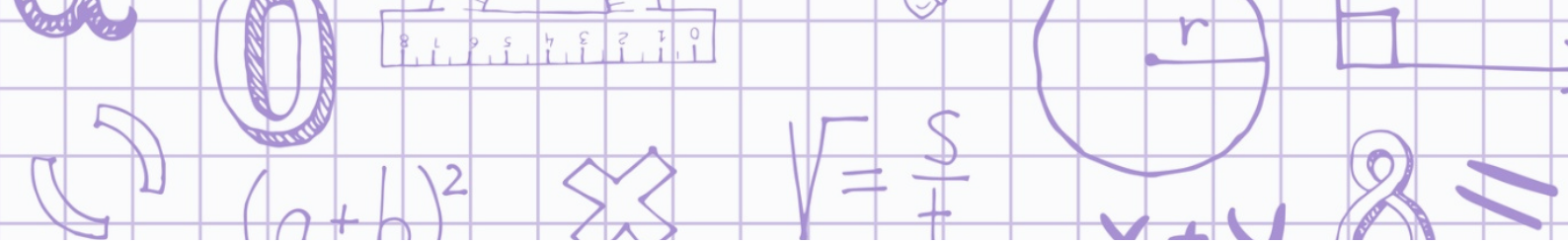
Expert tutorial



Need some extra help? That's what we're here for!

In this video Patricia will explain how to answer the first question in the Ratio, Proportion and Algebra section of your workbook (Q3) which looks at a Digit Cards question.

Grab your pen and paper and remember to take notes! If you want more access to awesome videos like this, [sign up for a full SchoolOnline subscription here.](#)



NOTES

Handwriting practice lines consisting of a series of horizontal purple lines spaced evenly down the page.

Fractions, Decimals & Percentages 2

Addition - Fractions

2018 Paper 1 Arithmetic

25	$1\frac{3}{4} + \frac{3}{4} =$ <div data-bbox="1032 856 1295 961" style="border: 1px solid blue; width: 162px; height: 50px; margin-left: auto;"></div>	<div data-bbox="1377 856 1458 928" style="border: 1px solid black; width: 50px; height: 34px; margin: 0 auto;"></div> <p>1 mark</p>
-----------	------------------------------------------------------------------------------------------------------------------------------------------------------------------------------------------------	-------------------------------------------------------------------------------------------------------------------------------------


Addition - Fractions

2018 Paper 1 Arithmetic

24	$\frac{1}{2} + \frac{1}{5} =$ <div data-bbox="1032 1621 1295 1726" style="border: 1px solid blue; width: 162px; height: 50px; margin-left: auto;"></div>	<div data-bbox="1377 1621 1458 1692" style="border: 1px solid black; width: 50px; height: 34px; margin: 0 auto;"></div> <p>1 mark</p>
-----------	-------------------------------------------------------------------------------------------------------------------------------------------------------------------------------------------------	---------------------------------------------------------------------------------------------------------------------------------------


Subtraction - Fractions

2017 Paper 1 Arithmetic

23	$\frac{3}{4} - \frac{3}{8} =$  <div data-bbox="1031 640 1291 745" style="border: 2px solid blue; width: 160px; height: 50px; margin: 10px auto;"></div>	<div data-bbox="1372 640 1453 714" style="border: 1px solid black; width: 50px; height: 35px; margin: 0 auto;"></div> <p>1 mark</p>
-----------	-------------------------------------------------------------------------------------------------------------------------------------------------------------------------------------------------------------------------------------------	-------------------------------------------------------------------------------------------------------------------------------------

Arithmetic - Fraction Subtraction

2016 Paper 1 Arithmetic

27	$\frac{3}{10} - \frac{1}{20} =$  <div data-bbox="1031 1413 1291 1518" style="border: 2px solid blue; width: 160px; height: 50px; margin: 10px auto;"></div>	<div data-bbox="1372 1413 1453 1486" style="border: 1px solid black; width: 50px; height: 35px; margin: 0 auto;"></div> <p>1 mark</p>
-----------	-------------------------------------------------------------------------------------------------------------------------------------------------------------------------------------------------------------------------------------------------	---------------------------------------------------------------------------------------------------------------------------------------

KS2 Study Club

Expert tutorial



Need some extra help? That's what we're here for!

In this video Patricia will explain how to answer the first question in the Fractions, Decimals & Percentages section of your workbook (Q25) which looks at Adding Fractions.

Grab your pen and paper and remember to take notes! If you want more access to awesome videos like this, [sign up for a full SchoolOnline subscription here.](#)

