

KS2 Study Club

Maths Week 3 Workbook

Questions



KS2 Study Club

Topics

Welcome to week 3 of your 10 week Study Club!

Every week you'll get a practice workbook to work through a range of topics, taken from our KS2 Maths Intermediate Course.

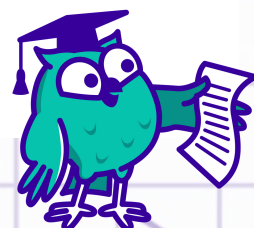
We've also included links to 2 of our expert tutorial videos on some of these exact questions. That way, if you get stuck, you can try watching one of our tutorial videos with our Maths expert Patricia.

For full access to all of the corresponding videos sign up for a SchoolOnline subscription from £8.99 a month.

In next week's email we'll send you the answers to this workbook to download *PLUS* a brand new workbook to practice.

Your week 3 workbook topics are:

- Calculations questions including Money Problems
- Fractions, Decimals & Percentages questions including Adding and subtracting fractions



Calculations 3

Money - Problem

2017 Paper 3 Reasoning

5

The children at Farmfield School are collecting money for charity.

Their target is to collect £360

So far they have collected £57.73

How much **more** money do they need to reach their target?

£

1 mark

Word Problem

2019 Paper 2 Reasoning

11

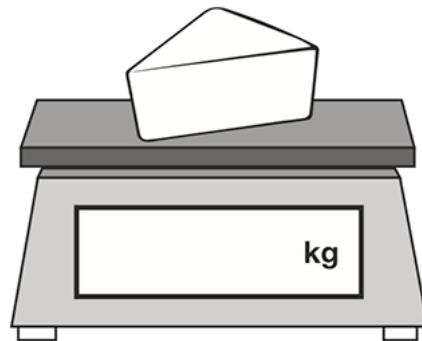
Amina is shopping.

She says,



I would like to buy **one-quarter** of a kilogram of cheese.

Write one-quarter on the scales as a decimal.



1 mark

The cheese costs £1.35

Amina pays with a £2 coin.

How much change should Amina get?

1 mark

Word Problem

2017 Paper 2 Reasoning

4

This table shows the heights of three mountains.

Mountain	Height in metres
Mount Everest	8,848
Mount Kilimanjaro	5,895
Ben Nevis	1,344

How much higher is Mount Everest than the combined height of the other two mountains?

Show
your
method

A large grid for showing the method. A small box on the right side of the grid contains the letter 'm'.

2 marks

KS2 Study Club

Expert tutorial

Key stage 2 Mathematics
Paper 3: reasoning

5

The children at Farmfield School
are collecting money for charity.

Their target is to collect £360

So far they have collected £57.73

How much **more** money do they
need to reach their target?

Click to play!

Need some extra help? That's what we're here for!


In this video Patricia will explain how to answer the first question in the Calculations section of your workbook (Q5) which looks at a Money Problem.

Grab your pen and paper and remember to take notes! If you want more access to awesome videos like this, [sign up for a full SchoolOnline subscription here.](#)

Fractions, Decimals & Percentages


Adding and Subtracting Fractions

2019 Paper 1 Arithmetic

26	$1\frac{1}{5} + 2\frac{1}{10} =$ 	<input data-bbox="1377 850 1450 926" type="text"/> 1 mark
-----------	---	--

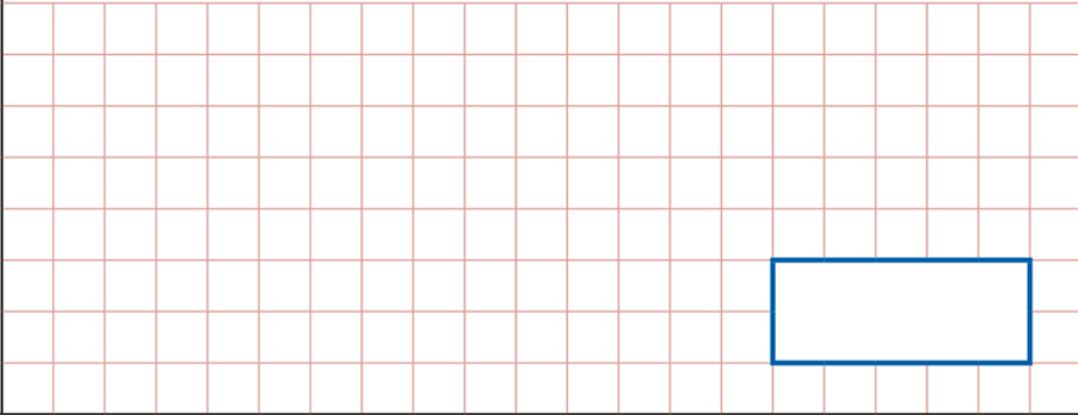
Adding and Subtracting Fractions

2019 Paper 1 Arithmetic

22	$1\frac{3}{7} - \frac{4}{7} =$ 	<input data-bbox="1377 1619 1450 1694" type="text"/> 1 mark
-----------	--	--

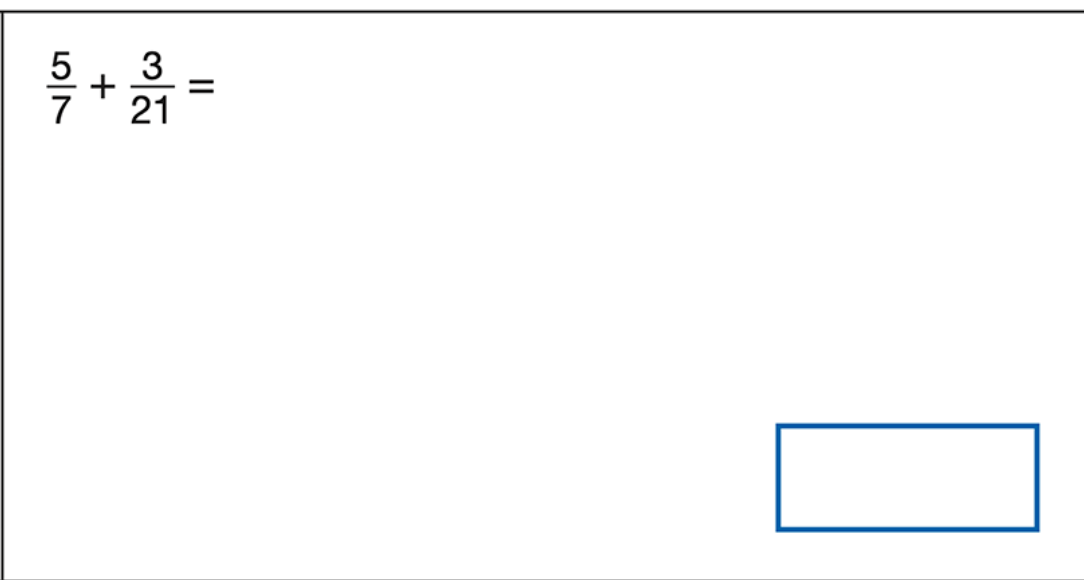
Adding and Subtracting Fractions

2019 Paper 1 Arithmetic

24	$\frac{1}{5} + \frac{3}{4} =$ 	<input data-bbox="1372 640 1453 724" type="checkbox"/> 1 mark
-----------	---	--

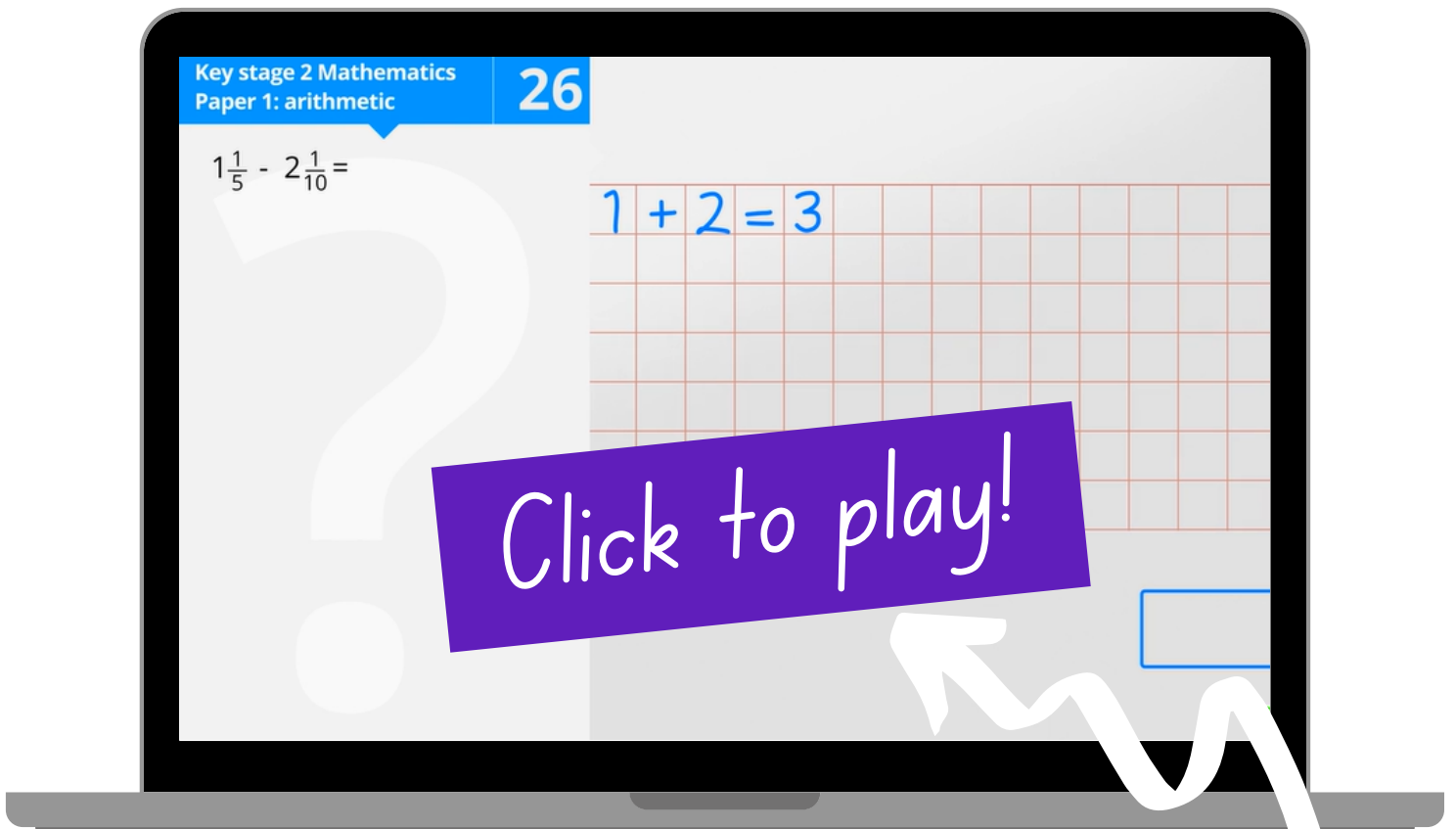
Addition - Fractions

2018 Paper 1 Arithmetic

17	$\frac{5}{7} + \frac{3}{21} =$ 	<input data-bbox="1372 1417 1453 1501" type="checkbox"/> 1 mark
-----------	---	--

KS2 Study Club

Expert tutorial



Need some extra help? That's what we're here for!

In this video Patricia will explain how to answer the first question in the Fractions, Decimals & Percentages section of your workbook (Q26) which looks at Adding and Subtracting Fractions.

Grab your pen and paper and remember to take notes! If you want more access to awesome videos like this, [sign up for a full SchoolOnline subscription here.](#)

